

PROSPECTUS



**BROOKTHORPE
HALL SCHOOL**





WELCOME TO BROOKTHORPE HALL SCHOOL

Brookthorpe Hall School is an independent specialist school in Gloucester for autistic young people aged 7-16.

Part of Options Autism, Brookthorpe Hall provides a therapeutic educational approach within a custom-built environment with specialised facilities to enable students to flourish.



Joy Price-Bish *Head Teacher*

I am so proud to introduce you to our school. Our team have worked hard to ensure that Brookthorpe Hall is a nurturing and stimulating school which will support pupils in their educational journey and enable them to achieve success, however that looks for them.

Through a shared celebration of neurodiversity we have created an academic experience that meets the needs of our individual pupils, providing robust pastoral support, great communication systems and an engaging curriculum. All our pupils are consulted about their choices and preferences.

We all share a sense of purpose. We are a school where attainment and achievement matter and we also recognise the fundamental importance of self-esteem, attachment, relationships and belonging.

The school is set in beautiful grounds surrounded by countryside and is located a short distance from Gloucester. The interior has been specially adapted to suit the needs of our pupils.

We have a high staff-to-pupil ratio with one teacher and teaching assistant for 5-6 pupils, a strong pastoral team to support and differentiate access in the classroom, and a clinical team to ensure the needs of all pupils can be met.

Our staff are passionate about supporting our pupils, who will benefit from deep and nurturing relationships that will motivate, inspire and push them to succeed in ways they perhaps never thought possible.

We take time to understand each young person as an individual, building positive relationships to remove barriers that have previously prevented our young people from engaging in education.

At Brookthorpe Hall, education is highly valued, creativity is celebrated, diversity is embraced and every individual is encouraged and challenged to be the best they can be.

Brookthorpe Hall School will:

SUPPORT

UNDERSTAND

CARE

MOTIVATE

NURTURE

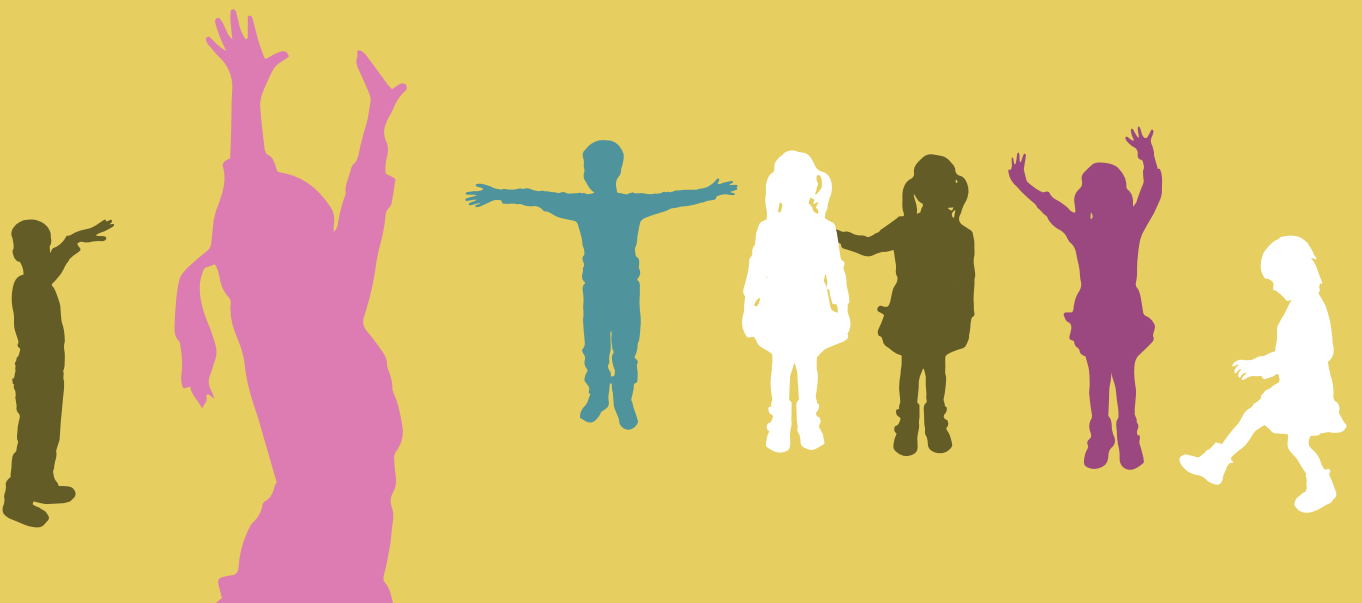
INSPIRE

ENGAGE

ENCOURAGE

PERSONALISE

CELEBRATE SUCCESS





OUR CURRICULUM

Brookthorpe Hall School offers an adapted curriculum so that all pupils benefit from individualised learning. Pupils will take part in activities which are meaningful and interesting for them and enable them to achieve relevant and challenging learning outcomes.

Our curriculum underpins our ethos and strives to provide opportunities for autistic pupils to achieve high standards.

We would like all our pupils to become successful learners, confident individuals and responsible citizens who make a positive contribution to society.

Pupils will receive and develop:

- A firm grasp of basic skills through the teaching of individualised programmes including the National Curriculum
- A broad and balanced curriculum that introduces new ideas and experiences
- Respect and consideration of individuality, backgrounds, cultures and religions in preparation for life in a diverse society
- A curriculum that promotes and supports development an understanding of fundamental British values
- The confidence that comes when achievement is recognised
- The benefits of learning and growing in a calm, friendly, stable and structured environment
- An education which prepares them for successful, inclusive, enjoyable, rich and active lives
- An education which gives them high expectations for their future
- A curriculum that builds on a variety of approaches to learning and teaching
- An education that allows development and expression through creative opportunities
- An education that uses real experiences as a foundation for learning
- A curriculum that supports their physical, emotional, moral and spiritual development.



OUR ETHOS

Everything we do is tailored to offering each young person the best possible educational experience.

We aim to provide a broad and balanced education within a happy, stimulating and healthy environment and we want each young person to thrive.

All students will be supported to learn at their own level through adapted teaching. We provide access to a range of excellent educational opportunities, certified subjects and national accreditations, as well as vocational and life skills subjects to prepare pupils for life beyond school.

We work closely with families and professionals to create a nurturing, enriching environment for learning. For us, the family-teacher relationship should be one of partnership and collaboration, combining different kinds of knowledge, experience and care. From the very first conversation about enrolment, to the final day of school, we're there to help families and work together on the best possible outcome for each child.



OUR THERAPEUTIC APPROACH

Brookthorpe Hall School offers a therapeutic educational approach with a staff team dedicated and determined to support every individual.

We work to the **“Ask, Accept, Develop”** autism strategy developed by Options Autism, which recognises that despite some shared traits, every autistic person is unique in their own way. This strategy enables our staff to appreciate the individual abilities of every child.

Our staff are trained in Trauma Informed Practice so we're well equipped to help pupils address underlying complex trauma experienced during childhood or in previous school placements.

We also have access to a clinical team who provide care and therapy to benefit our pupils. Clinical support may include:

- **Speech and Language Therapy**
- **Occupational Therapy**
- **Other types of therapy as required**

Our holistic approach and safe and nurturing environment enables us to give our pupils the space and opportunity to grow in confidence.



OUR FACILITIES

Our school has been designed with specialised facilities, creating a unique environment which will help our learners achieve the best possible outcomes from their education.

There is calming décor in the main areas, and smaller areas or learning labs offering more stimulation. There is also a **“Relax and Reset”** room and a carefully designed sensory space.

The school has an indoor hall, an outdoor sport area, sensory garden, a suite of specialised learning areas and spacious classrooms.

Throughout the school, there are also a number of central spaces designed to help students spend social time with each other.

Our location also offers lots of options for our Enrichment Programme, from opportunities for pupils to access local activities, for example at the leisure centre, to trips out into the surrounding area including the Cotswold Wildlife Park.





ADMISSION TO BROOKTHORPE HALL SCHOOL

For consideration for admission:

- Pupils will be between 7 and 16 years old
- Their needs should arise out of an autistic spectrum condition
- They will have an Education and Health Care Plan (EHCP) issued by their Local Authority
- The Local Authority will accept financial responsibility for the pupil's education at Brookthorpe Hall School
- The child will have the commitment and support of their parents/carers to our educational approach
- The school is suitable for the child's age, ability and aptitude
- The child's attendance at school would be compatible with the provision of efficient education for the pupils with whom the child would be educated
- The attendance of the child at the school would be compatible with the efficient use of school resources
- Admissions are made on the basis of availability of placements, taking into account the above factors, plus a child's level of functioning, learning difficulties and age.

ADMISSIONS PROCESS

All pupils admitted to Brookthorpe Hall School will have been initially referred by their Local Authority (LA). If, after reviewing the information provided, the school believes that the pupil meets the admission criteria, arrangements will be made with the LA for the parents/carers and pupil to visit the school.

The visit will include a tour of the school, introduction to key staff and a meeting at which the school policies and curriculum are discussed. Visitors will have the opportunity to ask any questions they may have.

If, following these visits, all parties are agreed that the pupil's needs can be met at the school and that the pupil and parent/carers are committed to the placement, arrangements will be made for admission.

CONTACT US

Brookthorpe Hall School

Stroud Road
Gloucester
GL4 0UN

To make a referral or for more
information please contact:

T: 01452 717004

E: brookthorpeenquiries@brookthorpehallschool.co.uk

W: www.brookthorpehallschool.co.uk



**BROOKTHORPE
HALL SCHOOL**

Part of

OptionsAutism